



TRAVEL
SMTP

Instructions

Mozilla Thunderbird

This manual is written for users who already have an e-mail account configured in Mozilla Thunderbird and will therefore only focus on how to change the SMTP server.

In this manual you will find a walkthrough to quickly and easily configure your email software for the usage of Travel SMTP.

You will also find extra information of all possible configuration options.

IMPORTANT:

Before changing your settings and using the Walkthrough, please read caption "Possible configurations" first and chose what port number and corresponding SMTP you are planning to use.

Table of contents

| | |
|--|----------|
| Register extra email addresses to your Travel SMTP account..... | 2 |
| Guide & Walkthrough | 3 |
| Tip for domain name owners..... | 5 |
| Possible configurations (port numbers & encryptions)..... | 6 |

Register extra email addresses to your Travel SMTP account

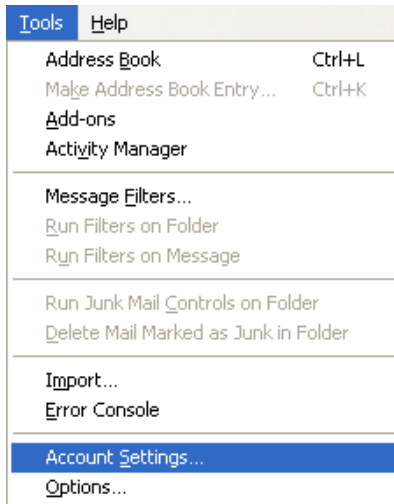
To prevent people from sending email messages from email addresses they do not own (anti spam policy), all email addresses you use with Travel SMTP need to be registered and validated. The email address you used during your registration is automatically validated and ready to use. All other email addresses that you use can be registered to your Travel SMTP account by logging into our website:

<https://www.travelsmtp.com/s/login.php>

You can also go to the website's main page and then click on "**Login**" at the right top of the window. After you are logged in, go to "**Senders**" to add extra email addresses.

Accounts with unlimited senders can also register domain names to their accounts. When a domain name is registered to your account, you will no longer have to specify each email address from that domain separately and all possible email addresses from that domain will automatically be registered and validated.

After saving extra email addresses and/or domain names, you will receive an email message from our server with a verification link. Click on this link or enter the verification code directly. The address will now have the status "**Verified**" and can now be used with your Travel SMTP account.

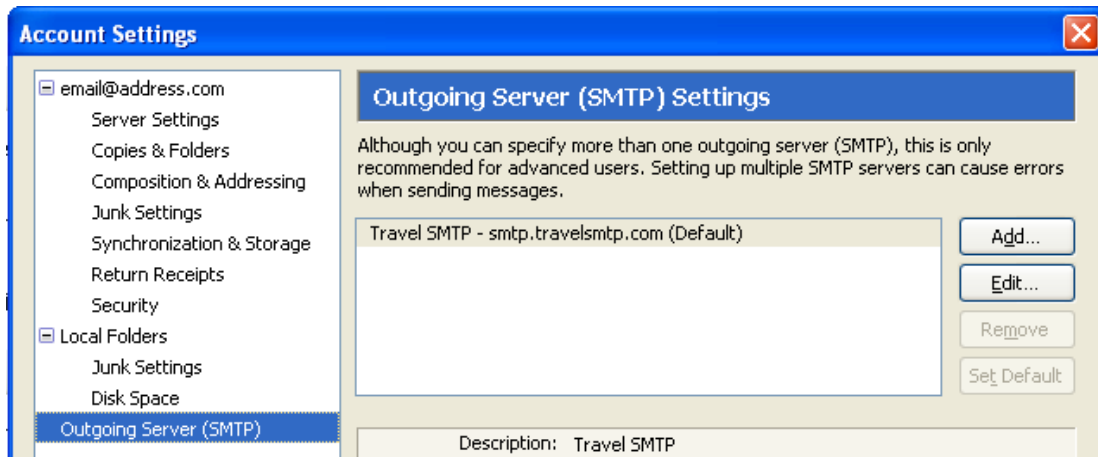


Step 1:

Go to **Tools** in the main menu bar and choose **Account Settings**.

Step 2:

Select **Outgoing Server (SMTP)** on the left and then click either the **“Add”** button on the right to create a new SMTP server (and keep your existing SMTP server intact), or click the **“Edit”** button to replace your old SMTP server:



Step 3:

In the SMTP Server window that will appear, make sure you fill in the following settings:

Server Name: ***smtp.travelsmtp.com***

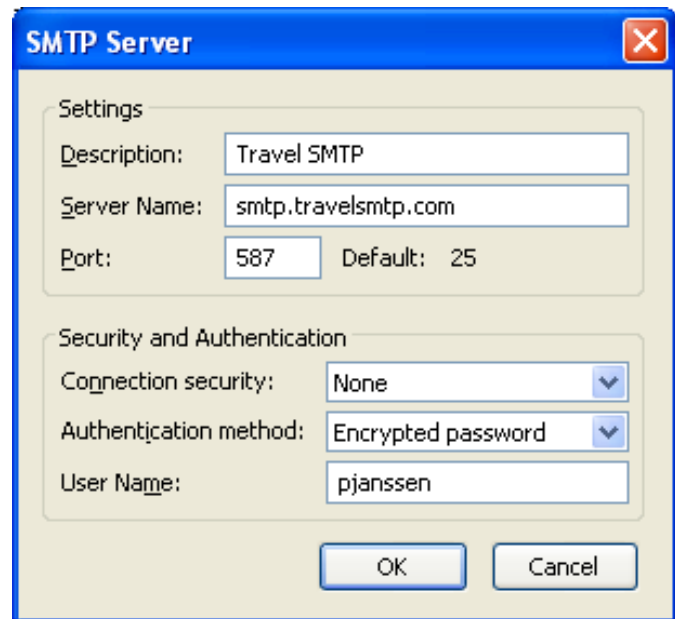
Port: ***587***

If you want to send your e-mail in encrypted form, you can select "**None**" at the **Connection security** option (optional).

Select "**Encrypted password**" as the **Authentication** method.

At **User** Name, enter the Travel SMTP username that you received from us.

Press "**OK**" to save the settings.

**Step 4:**

The first time you send an e-mail that uses this SMTP server, Mozilla Thunderbird will ask you for a password. Use the password that you received from us and Mozilla Thunderbird will remember this the next time you send e-mail.

Tip for domain name owners

When you use your own domain for emailing and want to improve email deliverability, you might want to add SPF records in your domain's DNS. Most webhosting companies provide a DNS tool in the control panel you use for managing your domain. For detailed instructions on how to add DNS records for your domain, please consult your webhosting provider or your control panel's manual.

If you do not yet have SPF records added for your domain, add the following two records of type TXT and SPF:

```
@    IN    TXT    "v=spf1 mx include:travelsmtp.com ?all"  
@    in   SPF    "v=spf1 mx include:travelsmtp.com ?all"
```

If you already have SPF records in your DNS, just add the ***include:travelsmtp.com*** part to it.

Possible configurations

The following port numbers and encryptions are possible with Mozilla Thunderbird:

| Description: | Server address: | Port: | Encryption: |
|---|-----------------------|-------|------------------|
| Default TLS configuration | smtp.travelsmtp.com | 587 | None or STARTTLS |
| Optional | smtp.travelsmtp.com | 2525 | None or STARTTLS |
| Default SSL configuration | smtp.travelsmtp.com | 465 | SSL/TLS |
| Firewall-proof configuration | smtp80.travelsmtp.com | 80 | None or STARTTLS |
| Firewall-proof SSL configuration | smtp80.travelsmtp.com | 443 | SSL/TLS |

The above options are all tested and working on Mozilla Thunderbird. This means that in case one of the options do not work for you, there either is a mistake in your configuration (in that case, please check the FAQ on our website for help with configuration problems), or the network you are using is blocking particular communication. In the last case, you will need to use the firewall-proof option on port 80 (also note this server has a different address!).

What configuration should I use?

It is recommended to use an encrypted connection (SSL/TLS). When using an encrypted connection, the communication from your computer to the Travel SMTP server will be secured and unreadable for others other than the receiver of your email. In particular when you work on public networks like WiFi hotspots, this is the recommended option.

Sometimes the default SMTP ports are being blocked by firewalls, for example in hotels or campsites, or in areas like China. In that case, you will need to use one of our firewall-proof configurations (port 443 is recommended over port 80).

In this manual we will use the default TLS configuration on port 587. If you chose to work with one of the other possible configurations listed above, then change the server address and corresponding port number in **step 3**, as listed in the above table.